

# The urban landscape

A pilot project for Lefkara



Department of  
Antiquities, Cyprus

## Criteria for the choice of the pilot site

1. Feasibility
2. Accessibility
3. Obvious Results
4. Exemplary buildings
5. Impact on the population
6. Acceptance by the local authority



Department of  
Antiquities, Cyprus

## Candidate places for the pilot project

1. Principal entrance to the town
2. Central square
3. Principal commercial street
4. Square around the church of Saint Andronikos



Department of  
Antiquities, Cyprus

## Main entrance to the town



Department of  
Antiquities, Cyprus

## Main square



## Main commercial street



## Square around St. Andronikos

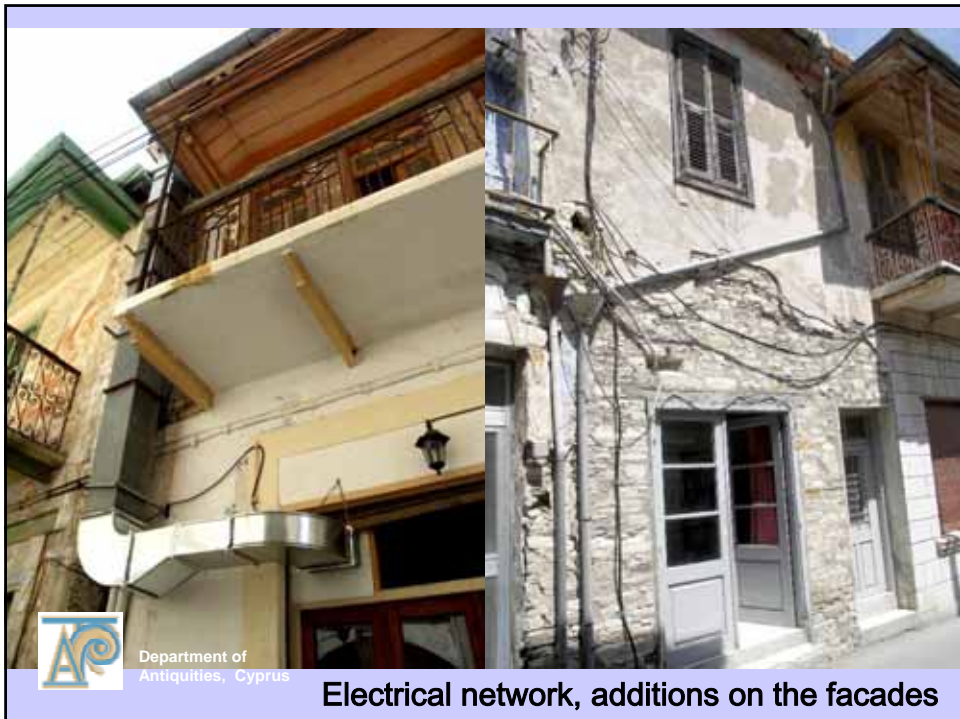


## Identification of problems

1. Alterations of the façades
2. Commercial signs
3. Introduction of new elements on the facades
4. New architecture
5. Electrical network
6. Mobilier urbain
7. Signage



Department of  
Antiquities, Cyprus



Alterations of openings, introduction of wrong elements



Department of Antiquities, Cyprus

Alteration of the roofscapes



Department of Antiquities, Cyprus

## Previous studies

---

### **Local team**

Problem evaluation, positive values and feasibility

Definition of the working area

### **Team Oxford Brookes University**

Holistic approach

Durability of the action

Participation



Department of  
Antiquities, Cyprus

## Next steps (RehabiMed Method)

---

**Measured drawings of the facades and streetscape**

**Historic studies**

**Research on the original colours**

**Research on the needs of the inhabitants**

**Proposal for the action**

**Organisation of the pilot action teams (masons, craftsmen)**



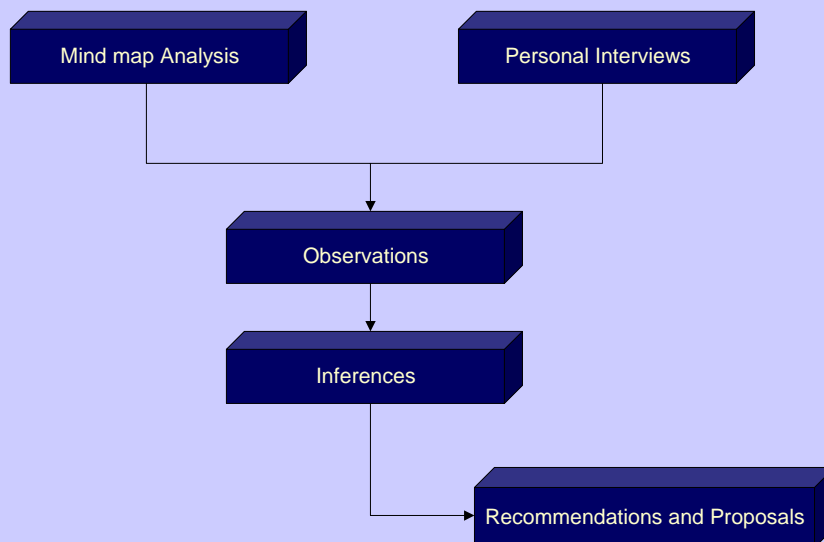
Department of  
Antiquities, Cyprus

**A Presentation on  
Vernacular Architecture of Lefkara**



*By students and staff of the Masters course in  
International Studies in Vernacular Architecture  
ISVA 2004-2005  
Oxford Brookes University, Oxford, UK*

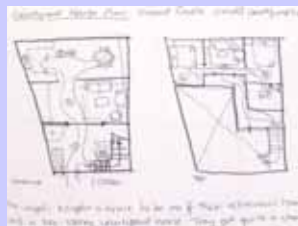
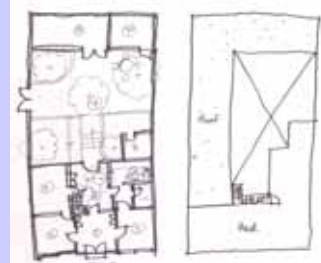
**Method of Approach**



## Methodology and Findings

### 3. Field sketches: courtyard house plans

Relationship  
between  
architecture and life



## Mind Map Analysis



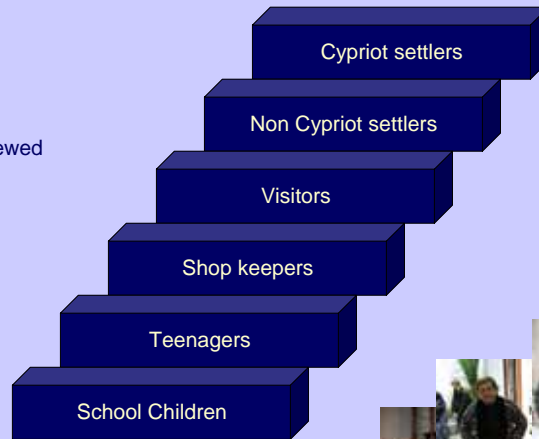
Sample of Mind Maps



Analysis of Mind Maps

## Groups Interviewed

More than 50  
People Interviewed



## Community Response

### Responses about Lefkara



- The people interviewed were largely positive about Lefkara, including the old stone buildings and the community spirit
- People complained about the traffic in the town, and the loss of population and the possible decline of the native craft industries of lacemaking, and silver work



## Observations of the Community

### Positive Aspects

- Community Spirit
- Safe Environment – Community Policing
- Trustworthy and Honest Community
- Chapels Maintained by the Community
- School
- Location of Village
- Traditional Architecture

### Concerns

- Traffic Issues
- Decline in Lace and Silver Industries
- Diminishing size of Younger Population
- Lack of Amenities for Young People
- Modern Buildings Diluting the Character of the Village
- Derelict Buildings
- Tourism



## Tourism Concerns

### Observations

- General confusion about orientation
- Circulation through Immediate Shopping Facilities
- Unaware of other attractions
- Duration of stay limited

### Possible Reasons

- Lack of appropriate information
- Non-specific signage

## RECOMMENDATIONS

## WASTE MANAGEMENT

- Possible implementation of a strategy for waste management
- Collection strategies could be devised to enable safe and efficient disposal of waste



Map showing Districts within Lefkara

## RECOMMENDATIONS

## TREATMENT OF ROOFSCAPE

- Improve the treatment of the Roofscape



skyscape of Lefkara



Example of Solution



## Existing Signage

- Lack of Appropriate Maps and Signage
- Misleading Information
- Repetition of Signs
- Location of Signs
- Clarity of Road Signs
- Non-specific Signage



## Rehabilitation

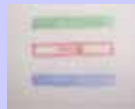
- Stabilising Derelict Buildings
- Opening Abandoned Courtyard for Public Use
- Creating Employment



## Traffic



### Key



- Pedestrian Zone
- One-Way Loop
- Main Two-Way Streets

### Proposed Traffic Revision

- A Pedestrian Zone is needed, because the laceworkers sit on the street sewing



- One-Way Streets should channel the traffic around the main area
- Two-Way roads connect to the One-Way loop, and lead out of town

## Suggestions for Improvement



- An expanded public square with a park, or green area in front of the school
- more plants, more landscaping and more benches and seats

### Renovate Town Square

- Town Square is crowded with many cars and pedestrians – which creates a dangerous traffic situation
- Town Square should become a pedestrian free zone, and a new fountain should be the centre-point of the square

